



**Scan the QR Code
to download the
brochure soft copy.**

Head Office:
P.O. Box: 43528,
Abu Dhabi, U.A.E.
Tel: +971 2 641 9778
Fax: +971 2 641 9773

Dubai Office:
Unit 909,
Fortune Executive Tower
Plot No. T1, JLT, Dubai, U.A.E.
Tel: +971 4 454 2308
Fax: +971 4 454 2286

Kuwait Office:
Fatema Complex,
M-Floor, Farwaniya Kuwait
Tel: +965 2 4730115
Fax: +965 2 4730110

E-mail: info@intercool.ae • Website: www.inter-cool.com

EMPOWERING SUSTAINABLE BUILDINGS

HIGH QUALITY
PRODUCTS AND
SERVICES



About us

Empowering Sustainable Buildings



InterCool was founded and established as an Engineering and Procurement Company to provide the HVAC/MEP Construction industry with engineered products/systems. High quality products and services are the primary focuses of the company. Engineering solutions and proper application of products take precedence over product sales.

With experienced management, dedicated engineers, and staff InterCool provides the following services and products:

- Seismic Specialist for non-structural components
- Pipe Stress Analysis, Surge Analysis, Hydraulic Analysis, Thermal Expansion and Contraction of Piping
- Design and Fabrication of Steel Structure Supports for MEP services
- Vibration and Noise Controls specialist
- Architectural and Mechanical Acoustics Specialist
- Air Filtration Specialist for Indoor Air Quality, Commercial and Industrial to control VOCs, neutralize odors, kills bacteria, viruses and save energy.
- Air Conditioning Products
- General and Control Water Valves, PICV butterfly, globe valves and strainers
- Commercial and Industrial Ventilation Fans
- Shelter Technology Equipment
- EIFS insulation system
- Other HVAC products



VISION

Continuously support Clients, Consultants, Contractors, Building Owners & End Users with engineering services and quality products that comply with international codes, specifications, and local standards.

Resulting in sustainable buildings that adapt to the constantly changing environment and energy costs.

MISSION

InterCool aims to be a major provider of Engineered HVAC/MEP products in the region. Engineering and technical aspects will take precedence over products.

InterCool will search the world to introduce new and advanced technologies that apply to the HVAC/MEP Industry.





Managing Director's Message

M. BASSEL ANBARI, P.E.
Managing Director

Over the 30 plus years that I have been involved in the construction industry, I have been fortunate enough to be able to work in various facets of the industry. From my time as a mechanical designer in an engineering consulting firm in the US, to being a manufacturer's representative at an engineering supply company in the UAE, these experiences have been crucial in helping me view projects from multiple perspectives of those involved. Clients, Consultants, Contractors, and End Users. Ultimately, this has allowed me to understand the expectations and requirements for each of the above-mentioned in greater detail.

With advancement in technologies and building techniques, those requirements and expectations are constantly changing, and nowhere is this more evident than here in the UAE. However, even with all these changes, there will always be certain aspects that remain constant. The need for cost effective, high quality properly engineered products and services, timely completion of tasks, and the peace of mind that an assigned task will be done correctly and in line with project specs.

It is these points that I had in mind when I started InterCool in 2008, and it is these points that I have instilled in the company's DNA. Providing high quality engineered products and solutions, fulfilling each projects' unique requirements, and working in tandem with clients, consultants, and contractors to project completion. These same points form the essence of what InterCool is, and I am confident of the value we bring to any project we're a part of.

Quality Without Compromise.

Our Staff



InterCool's key to success has been its ability to attract, develop and retain the best human talent available. Employees at InterCool are more than just staff and laborers; they come together to form the InterCool Family.

We pride ourselves on punctual delivery of projects, to budget and in accordance with the specified requirements. We believe close team work from a dedicated professional team who work in harmony at all levels, both at head office and at the project site is the key to this success.

InterCool has executed a wide range of projects across the UAE and wider GCC.

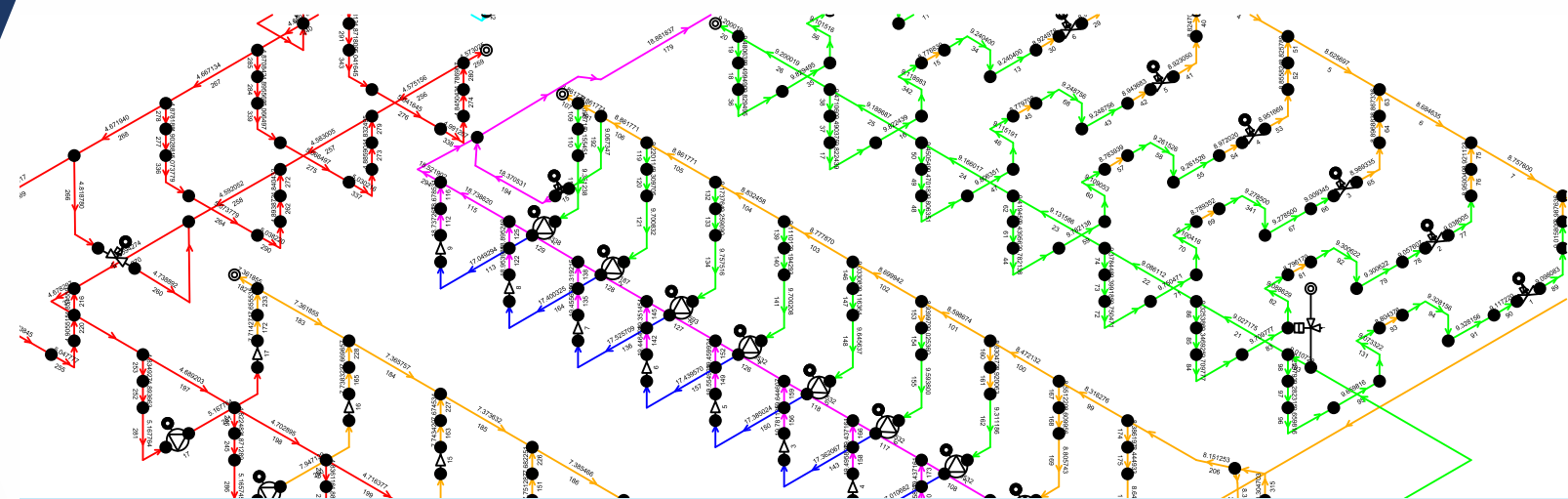
The Senior Management of InterCool operates from our Abu Dhabi, Dubai and Kuwait offices and is responsible for the overall management and administration of the Company and overseeing the projects being undertaken.

The project-based engineering and technical staff are responsible for project/construction management and supervision. In addition, the general clerical and administrative staff from the head office and other offices provide administration to all the employees and clients.





Pipe Engineering Solution



Very often pipe distribution network requires pipe stress analysis to determine loads, forces, and stress on pipe support systems and to make sure that pipes are not overstressed according to required codes and standards.

InterCool provides design services to carry out pipe stress analysis for all building services; Chilled Water, Hot water, Cold water, Steam, all fluid systems. We use licensed CEASAR II software. Modeling of piping distribution system including location of supports, guides, and anchors is done first to determine location of over stressed pipes. Other components such as expansion joints are then introduced to reduce pipe stresses to safe and acceptable levels. The study considers many different cases:

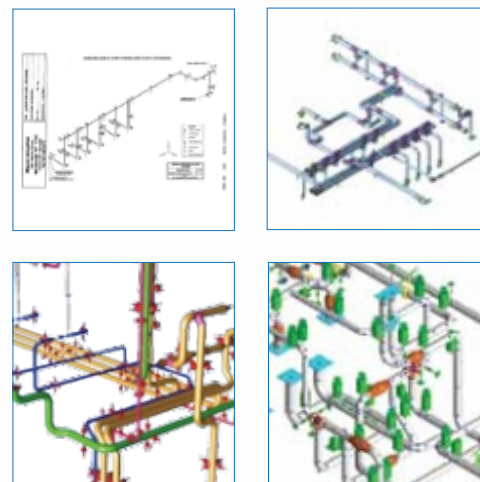
1. Hydraulic
2. Operational
3. Sustained
4. Occasional
5. Expansion
6. Combinations of cases as per Job requirement

Once loads and forces are determined at each supports, guides, and anchors; InterCool takes the output from the stress analysis and design pipe steel support structures using structural design software MIDAS & STAAD. Pipe Support Design will include detailed designs and fabrication drawings. Report will show different case combinations according to code and standards.

Pipe stress analysis and steel support ensures the integrity and safe operation of water systems in District Cooling Plants, Energy Transfer Stations (ETS), Chiller Rooms, Pipe Distribution networks, and many other applications.

Pipe Stress Analysis, Thermal Expansion and Contraction of Piping Systems. Design of Steel Structure Supports for Piping System

All Engineering and design is done in-house, as such we're confident in our ability to produce quality solutions that are both cost effective, and perform as per expectation. So confident, that InterCool provides Professional Indemnity Insurance on all design submissions.



Surge and Water Hammer Analysis

Internal shock, or pressure surge, known commonly as water hammer results from abrupt change of fluid velocity within the system. Under certain conditions, these shock forces can reach magnitudes sufficient to rupture or collapse a piping system, regardless of the material of construction. The transient pressure is the rapidly moving wave that increases and decreases the pressure in the system depending on the source of the transient and direction of wave travel.

Rapid valve closure, or sudden shut down of pumps and any rapid change to system operation can result in the buildup of shock waves due to the conversion of kinetic energy of the moving fluid to potential energy that must be accommodated. These pressure waves will travel throughout the piping system and can cause damage far away from the wave source.

The magnitude of water hammer is a function of the fluid properties and velocity, the modulus of elasticity and wall thickness of the pipe material, the length of the line, and the speed in which the momentum of the fluid changes.

In addition to rapid valve closure or opening, sudden air release and pump start-up or shut-down can create water hammer. Water hammer pressure surges do not show up readily on conventional tube pressure gauges because of the slow response of the instrument. The net result of water hammer can be excessive pressures, pipe vibration, or movement that can cause failure in pipe and fittings.

Intercool provides complete pipe engineering design solution.



Seismic Specialist for Non Structural Components

InterCool is a regional provider of engineering services, consulting services and restraint system components for nonstructural seismic bracing.

Specializing in the healthcare, industrial, and commercial construction markets. Our entire focus is on providing Building code compliant solutions that are both cost effective and construction friendly. Our services and solutions are specific to MEP & Firefighting building utility systems. InterCool's services are available to supplement the specialized needs of the design construction team or simply act as a standalone seismic bracing engineer of record for the project. All designs and solutions are stamped by a Professional Engineer specialized in this field

InterCool's focus is the design of nonstructural seismic restraints, which has enabled us to gain a tremendous amount of experience and expertise complimented by smooth execution efficiency. Together with Mason Industries we are constantly upgrading our products and services based on changing building codes, industry standards and feedback from the installing contractors. In order to streamline our services, InterCool archives our Engineering details and solutions for easy recall. This approach removes the redundancy of engineering the most common situations, and has become the standard for many engineers and contractors having to deal with the requirements of International Building Codes. With many projects completed and archived at our fingertips, we can quickly and cost effectively provide you the solution you need to meet the requirements and pass the scrutiny of inspection and engineering review.

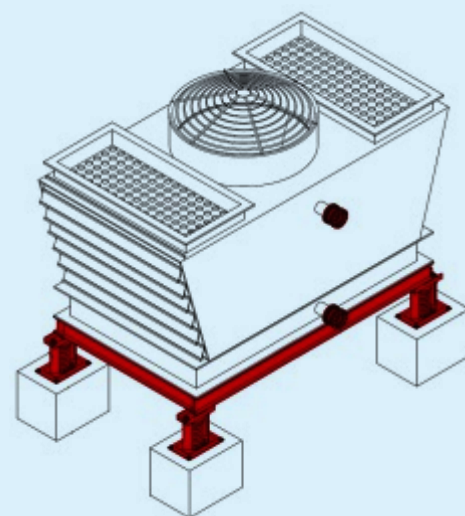
InterCool provides services from project bid and pre-construction thru post installation walks with



the inspection authorities and all aspects in between. With specific emphasis on reducing labor costs, InterCool will become an extension of your project staff.

PRODUCTS

- Seismic rated spring vibration isolators
- Seismic rated neoprene vibration isolators
- Seismic restrained isolation system for suspended equipment
- Systems bracing for piping, ducting, and electrical cable trays
- Seismic restraint floating floors
- Seismic anchors
- Seismic bracing
- Vertical Pipe Riser Support Systems
- Pipe Expansion Compensators and their applications.
- Rubber Pipe Flexible Connectors
- Stainless Steel Pipe Flexible Connectors
- Building Isolation System



InterCool Vibration & Noise Control Specialist



InterCool provides engineered solutions and systems to minimize and eliminate vibration and noise transmission to building structures generated by electromechanical equipment such as:

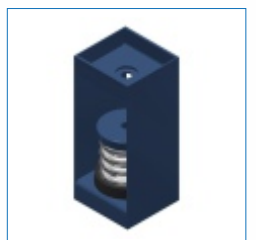
- **Chillers, Cooling towers**
- **Pumps**
- **Air Handling Units, Fans and Blowers**
- **Generators & Transformers**

We provide calculations, studies, drawings, supply of material, supervision of installation and testing and commissioning of vibration efficiencies. We study and engineer complete system, applying and selecting proper vibration isolators and pipe flexible connectors to achieve specified level of isolation according to ASHRAE Standards and guidelines.

Isolating airborne noise generated from electro-mechanical equipment by designing and applying floating walls, floating floors, and floating ceilings. Carry out sound measurement and provide detailed reports. Our services and solutions are specific to MEP equipment's and systems for commercial and industrial applications.

PRODUCTS

- Spring and Rubber Vibration Hangers
- Spring and Rubber Vibration Mounts
- Inertia Bases
- Rubber & Stainless Steel Expansion Joints
- Isolated Roof Curbs
- Pipe riser spring support systems
- Elastomeric Pipe Flexible Connectors
- Stainless Steel Pipe flexible connectors



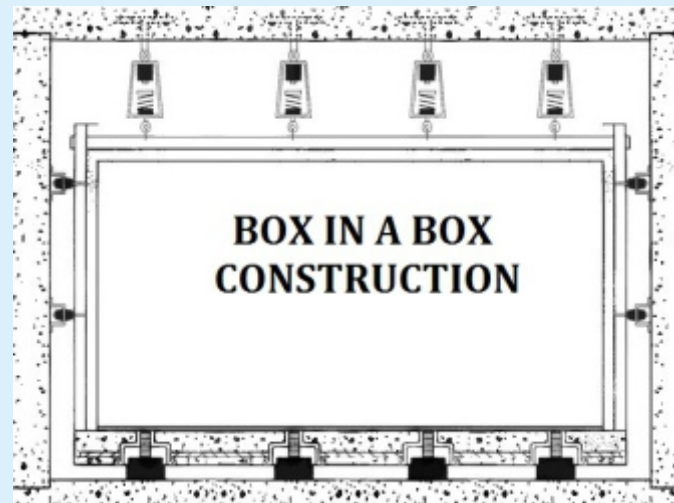
Architectural and Mechanical Acoustics Specialist

InterCool provides engineered solutions and systems to minimize and eliminate noise transmission to building structures.

Isolating airborne noise generated from electro mechanical equipment by designing and applying floating walls, floating floors, floating ceilings and acoustic absorption panels. We also provide and apply engineered architectural acoustic solutions for cinemas, studios, gymnasiums, ball rooms, meeting rooms, board rooms, and many other applications. We utilize products from leading manufacturers. We also provide acoustic performance testing utilizing latest sound measuring technology from Larson Davis Instrument. Some of the products we utilize:

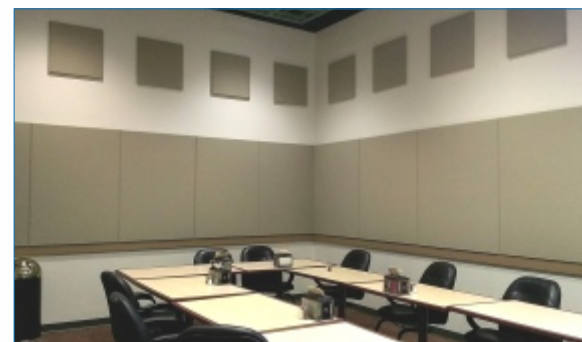
PRODUCTS

- Neoprene Jack Up Floating Floor
- Spring Jack up Floating Floor
- Form Work Floating Floor
- Floating wall
- Floating ceiling
- Building isolation
- Studio Floating floor, walls, and ceilings
- Acoustic Absorption Panels



LBI BOYD, USA Manufacturer of Acoustic Panels

- Acoustic panels
- Acoustic ceiling baffles & clouds
- Sound block
- Green acoustic panels
- Perforated acoustic panels
- Acoustic impact resistant panels



Manufacturer: LBI Boyd, USA
www.lbiboyd.com

LBI BOYD

Air Filtration for Indoor Air Quality, Commercial and Industrial

More than 99.4% kill rate of SARS CoV-2 Virus in air and surface



The quality of indoor air is an aspect of building design that is often overlooked. When in fact it has a substantial impact on the overall health, comfort and well-being of the building's occupants. In line with ASHRAE Standard 62.1, InterCool's recognizes the necessity of maintaining a clean air space. Free of particulates, carcinogens, VOCs, Viruses, odors, and any airway pollutants.

As such, InterCool has partnered with Global Plasma Solutions. Industry leader and Pioneer in Bi-Polar Ionization technology. Their patented products utilize Needle Point Bi-Polar Ionization (NPBI) to breakdown and eliminate any airway contaminants, all without producing any harmful byproducts such as Ozone gas, which is prevalent in other air filtration products.

This has allowed Global Plasma Solution products to attain UL 2998 (Air Cleaner Validation for Zero Ozone Emissions) certification.



Benefit of Needle Point Bi Polar Ionization (NPBI) System

- Reduces Particles
- Control Odors
- Reduces Pathogens
- Saves Energy
- Maintenance Free
- Negligible Pressure Drops
- No Replacement Parts
- Easy to Install

Pathogen	Time in Chamber	Rate of Reduction	Test Agency
Norovirus	30 minutes	93.5%	ATS Labs
Human Coronavirus 229E	60 minutes	99.0%	Analytical Lab Group
Legionella	30 minutes	99.7%	EMSL
Clostridium Difficile	30 minutes	88.9%	EMSL
Tuberculosis	60 minutes	69.1%	EMSL
MRSA	30 minutes	96.2%	EMSL
Staphylococcus	30 minutes	96.2%	EMSL
E. coli	15 minutes	99.7%	EMSL
SARS-CoV-2	30 minutes	OVER 99.4% KILL RATE	Innovative Bioanalysis

GLOBAL PLASMA SOLUTIONS, USA

Website: www.globalplasmasolutions.com

1. Needle Point Bi-Polar Ionization Devices
2. Modular Ionization Air Purification
3. Compact Anti-Cleaning Ionization System
4. Auto Cleaning Ionization System
5. Auto Cleaning NPBI Air Purification
6. Side Access Housing Air Purification System



Acoustic Louvers, Panels and Limp Lagging Acoustic Insulation

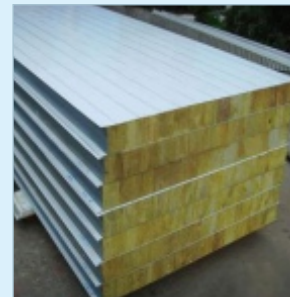
Acoustical louvers utilize louver blades with sound absorbent material to reduce infiltrating or escaping noise levels

ACOUSTICAL PANELS AND SYSTEMS

- Manufacturer of Acoustic Panels/products
- Acoustic Panels, Ceiling Baffles & Clouds
- Sound Block, Green Acoustic Panels, Perforated Acoustic Panels
- Acoustic Impact Resistant Panels



ICAL



ICLL | Limp Lagging Acoustic Insulation

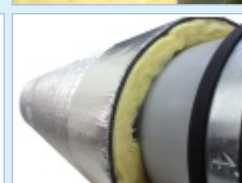
DESCRIPTION

Acoustic lagging comprising of vinyl based limp mass barrier faced with aluminum foil, with decoupler quilt layer. Model ICLL-25 mass-loaded, limp, vinyl barrier materials are used for enclosing noise sources, either draped around equipment, suspended between equipment casing. ICLL Barrier Materials can be used effectively to lag piping systems, ducts, etc. and are highly effective as crosstalk barrier. ICLL materials are available in 5 kg/m2 surface weight, with acoustical ratings of (25-28) STC. Product is easy to cut and install.

APPLICATION

- Surface wrapping of ducts and pipes, for mitigation of noise break-out
- Ceiling noise barrier
- Machinery cover liners
- Noise Control curtain panel and enclosures
- Crosstalk barrier

ICLL



* Tested according to ASTM E90 and rated in accordance with ASTM E413
- Dubai Acoustic Research Laboratory (DARL).

Floating Floor, Walls & Ceiling

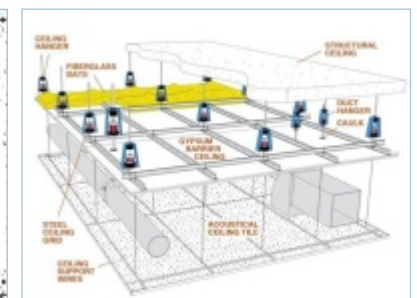
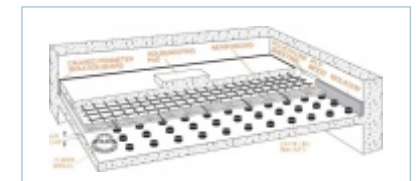
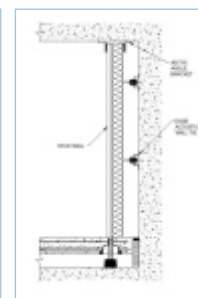
InterCool provides engineered solutions and systems to minimize and eliminate noise transmission to building structure. Isolating airborne noise generated from electro mechanical equipment by designing and applying floating walls, floating floors, and floating ceilings. We also provide and apply engineered architectural acoustic solutions for cinemas, studios, gymnasiums, ball rooms, meeting rooms, board rooms, and many other applications. We utilize products from leading manufactures. We also provide acoustic performance testing utilizing latest sound measuring technology from Larson Davis Instrument.

PRODUCTS

- Neoprene Jack Up Floating Floor
- Spring Jack up Floating Floor
- Form Work floating floor
- Floating wall
- Floating ceiling
- Building isolation
- Studio Floating floor, walls, and ceilings

MASON INDUSTRIES, INC.

Manufacturer:
Mason Industries, USA, Thailand



OSHDP
Office of Statewide Health
Planning and Development

UL LISTED

FM
APPROVED

NFPA

SP
US

CLASSIFIED
UL US
WATER QUALITY

SSI
ISO 9001
Registered

ITALPANNELLI

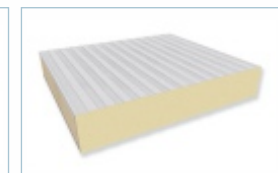
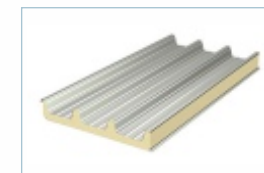
An Italian company specialized in the design and manufacture of insulated sandwich panels with insulation core in polyurethane foam and mineral fiber.

italpannelli

www.italpannelli.it

PRODUCTS

- Roof Panels
- Wall Panels
- Rockwool Roof Panels
- Rockwool Wall Panels
- Curved Panels
- Trapezoidal Steel Sheets
- Architectural Panels
- Sectional Door Panels



Project Gallery



PRESIDENTIAL PALACE



ETIHAD TOWER



FUJEIRAH SHEIKH KHALIFA HOSPITAL



DUBAI DCP3 EMPOWER



CLEVELAND CLINIC



SEA WORLD, ABU DHABI



OPERA HOUSE DUBAI



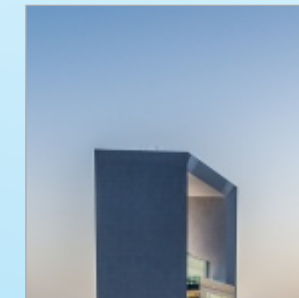
ABU DHABI WORLD TRADE CENTRE



FERRARI WORLD ABU DHABI



LOUVRE MUSEUM



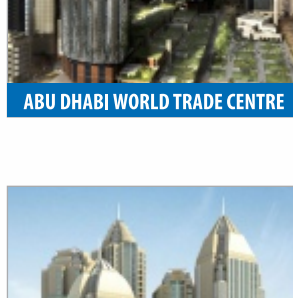
ADNOC HEADQUARTER



NEW ABU DHABI AIRPORT



ABU DHABI FINANCIAL CENTRE



DUBAI AIRPORT CONCOURSE 3



AL AIN SHEIKH KHALIFA MASJID



HABTOOR CITY



FAKEEH MED CENTER, DUBAI



ABU DHABI INVESTMENT AUTHORITY



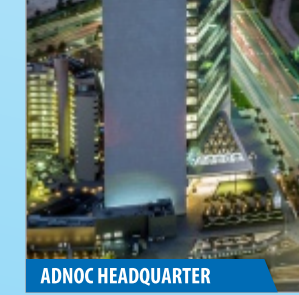
CAPITAL PLAZA



FAIRMONT HOTEL, ABU DHABI



YAS MALL



MAFRAQ HOSPITAL, ABU DHABI



NEW DOHA INTERNATIONAL AIRPORT



GATE TOWERS



MAFRAQ HOSPITAL, ABU DHABI



HABTOOR CITY

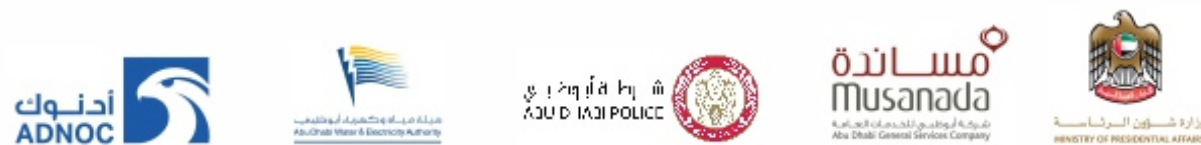


RETAIL MALL

Government Client References



Government Approval and Registration



Property Developers



Private Client References



PROJECT REFERENCES

PROJECT	CONSULTANT
Abu Dhabi International Airport, UAE	AECOM
Dubai International Airport, UAE	Dar Al Handesah
Presidential Palace (Qasr Al Watan), Abu Dhabi, UAE	EWAN Architectural Engineering
ADNOC New Housing Complex - Phase IV - DCP	Dar Al Handesah
ADNOC Ruwais Housing Complex - New Guest House	ARCHITECTURE & PLANNING GROUP
ADNOC Ruwais Housing Complex - Bachelors Accomodation	ARCHITECTURE & PLANNING GROUP
ADNOC New Corporate Headquarter	Hill International
ADNOC New Housing Complex- Married Flats	Al Torath Engineering
Borouge Innovation Center	ECG Engineering Consulting Group
Petroleum Institute Research Centre	Joacobs International
Blue Water Wharf, Dubai	WSP Middle East
Marsa Al Seef, Dubai	WS Atkins/ATK Engineering
Al Habtoor City	WS Atkins & Partners Overseas
Amesco Tower	National Engineering Bureau
The Lagoons, Dubai Creek Harbor Residence	ATK Engineering Consultant
DEWA Data Hub	PTS Consulting
Warner Brothers Theme Park 2	AECOM Middle East
Louvre Museum, Abu Dhabi	BURO HAPPOLD
Opera House	Atkins
Khalifa Data Center, Phase II	AECOM
Khalifa University	PMK International
Bulgari Hotel & Residences	WSP
Landmark	Arch Group
Business Bay, DCP 3	Allied Consultant
Dubai Mall Fashion Avenue Expansion	WSP
Nas Arena, Dubai	Dar Al Handasah
Al Maktoum Hospital	Kling Consult
Cleveland Clinic, UAE	AECOM/KEO
Mafraq Hospital	Burt Hill
Madinat Jumeirah Resort Dubai Phase IV	Architecture Design Consultant
Majlis at Intercon	Bainona Engineering Consultancy
Abu Dhabi Courthouse, UAE	Dar Al Omran
Abu Dhabi Future School, Chinese School	ATKINS
Dusit Hotel, Abu Dhabi, UAE	Bainona Consulting
Al Bustan Complex 5 Towers, Abu Dhabi, UAE	The COX Group Middle East
Fairmont Hotel, Abu Dhabi, UAE	Khatib & Alami
Yas Mall, Abu Dhabi, UAE	AECOM
Damac Heights	AECOM
Khalifa Data Center, Abu Dhabi, UAE	AECOM
Residential & Commercial Building at Plot P-5, Area W4, Abu Dhabi	ARCH Group
Ghayati Hospital, UAE	Burt hill
Worli Mixed Used, India	Red Engineering
Doha Interntional Airport Project, Doha Qatar	Overseas Bechtel Inc
College of Media and Communication, Doha Qatar	Louis Berger
North Gate Mall, Doha Qatar	Hill International
Sidra Medical College, Doha Qatar	KEO Consultant

PROJECT REFERENCES

PROJECT	CONSULTANT
TB Unit @ Al Rumailah for HMC, Doha Qatar	KEO
Arabic Channel Extension, Doha Qatar	ECG
Al Sadd Sports Club, Doha Qatar	James Cubbit & Partners
Fairmont Hotel, Abu Dhabi, UAE	Consultant H.D.P. (Overseas) Ltd
Ambulatory Healthcare Centres, UAE	CPC Alpine
Dragon Mart, UAE	Dar Al Handasah
Masdar Institute	Armstrong
Abu Dhabi Financial Center	Oger International
Etihad Tower	Cansult / maunsell
Capital Plaza	CRSS
Abu Dhbai Investment authority	CRSS
ETISALAT tower	Shakland Cox
Mubadala ERDWA	Khatib & Alami
Al Reem Plaza	Helal & Partners
The Waves, Dubai Marina	NORR Group
G + 16 Building For Mr. Abdul Rahman Amin; Ajman	Adnan Saffarini
Hotel & Furnished Residence Development On Plot No B21 Oud	
Metha Dubai (Grand Hyatt)	Arkitektnik
Church Complex At Jebel Ali	Halford Associates
Night Club (Disco Theque) At Sheraton Plaza Hotel & Towers	
The Fairmont; Dubai	Arenco
Sharjah Mega Mall For Mr. Mohd Ahmed Al Qassimi	W. S. Atkins
Al Buheirah Insurance Tower On Plot No 406 At Al Majaz; Sharjah	Khatib & Alami
Dubai Internet City Phase II (5 Nos. of Building)	Ian Banham
Chicago Beach Hotel Resort & Development	W. S. Atkins
Al Shoala Complex ; Dubai	Khatib & Alami
Al Owais Residential Building; Sharjah	Khatib & Alami
Al Hamed Residential / Building At Al Khan & Al Majaz	Khatib & Alami